



Four Tracks

Five Tracks



Two Tracks

Three Tracks



WT-105B

Sling Doors



PRODUCT PARAMETERS

Water tightness	450 _{pa}
Air tightness	4.5 _{m³/(m·h)}
Wind pressure resistance	5K _{pa}
Sound insulation performance	30 _{dB}
U-Factor(U.S./1-P)	0.39
SHGC	0.25

Glass: Double Tempered Glass with argon gas
5mm+18A+5mm
(PVDF Aluminum Strip Between double glass)

Profile: 6063-T5 aluminum profile

Profile Thickness: frame 1.3MM, door leaf 1.2MM

Frame width: Four tracks:105MM/Five tracks:161MM

Handle: HOPPE One straight lock

Lock point: 304 Stainless Steel Single Hook Lock

Opening Way: Four Tracks / Five Tracks

Optional package: New 47 Pack / 70 Pack / 75 Pack

Sealing material: EPDM rubber strip

Available Size: Opening Panel (Width:600-1400/Height:800-2400)

PRODUCT PROCESS

- The entire window adopts internal and external gluing technology
- Embedded Design

WT-135D

Sliding door



PRODUCT PARAMETERS

Water tightness	350 _{pa}
Air tightness	3.0 _{m³/(m·h)}
Wind pressure resistance	4.5K _{pa}
Sound insulation performance	32 _{dB}
U-Factor(U.S./1-P)	0.38
SHGC	0.22

Glass: Double Tempered Glass with argon gas
5mm+20A+5mm
(PVDF Aluminum Strip Between double glass)

Profile: 6063-T5 aluminum profile

Profile Thickness: frame 1.8MM, door leaf 1.6MM

Frame width: Two tracks 135mm / Three tracks 205mm

Handle: HOPPE Aluminum alloy hook lock/clasp

Hardware: 304 stainless steel single hook lock point lock seat

Optional package: New 47 Pack / 70 Pack / 75 Pack / 100 Pack

Opening Way: Two tracks/Three tracks

Sealing material: EPDM rubber strip

Available Size: Opening Panel (Width:580-1500/Height:800-2800)

PRODUCT PROCESS

- The overall use of internal and external gluing process
- Embedded design of fan material
- The lock point lock seat is made of stainless steel material
- Floor drain drainage design



WT-135

Sling Doors



PRODUCT PARAMETES

Water tightness	300 pa
Air tightness	4.5 m³/(m·h)
Wind pressure resistance	4.5K pa
Sound insulation performance	30 dB
U-Factor(U.S./1-P)	0.28
SHGC	0.22

Glass: Double Tempered Glass with argon ags
5mm+27A+5mm
(PVDF Aluminum Strip Between double glass)

Profile: 6063-T5 aluminum profile

Profile Thinckness: frame 2.2MM , door leaf 1.8MM

Frame width: Two tracks 135mm / Three tracks 205mm

Gasket: China Brand JIANGYIN HAIDA

Opening Way: Two Tracks / Three Tracks

Optional package: New 47 Pack/70 Pack/75 Pack/100 Pack

Sealing material: EPDM rubber strip, siliconized wool strip

Flush lock: PAG Aluminum Hook Lock

Lock point: 304 Stainless Steel Single Hook Lock

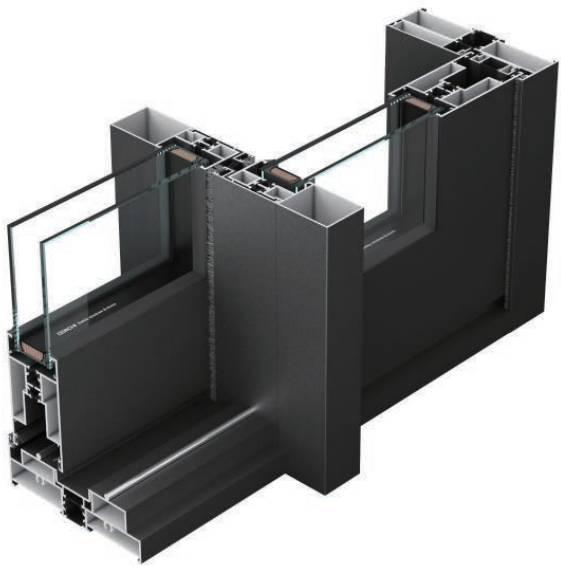
Available Size: Opening Panel (Width:580-1500/Height:800-2800)

PRODUCT PROCESS

- The overall use of internal and external gluing process
- Yarn fan thread pressing structure
- Fan material simple style design
- Embedded design of fan material
- The overlapping part of the hook cover is designed with a sealing strip

WT-143

Sliding door



PRODUCT PARAMETES

Water tightness	300 pa
Air tightness	4.5 m³/(m·h)
Wind pressure resistance	4.5K pa
Sound insulation performance	30 dB
U-Factor(U.S./1-P)	0.28
SHGC	0.20

Glass: Double Tempered Glass with argon ags
5mm+27A+5mm
(PVDF Aluminum Strip Between double glass)

Profile: 6063-T5 aluminum profile

Profile Thinckness: 2.2MM

Frame width: Two tracks 143mm / Three tracks 217mm

Handle: HOPPE Aluminum alloy hook lock/clasp

Hardware: 304 stainless steel single hook lock point lock seat

Insulation strip: Standard

Optional package: New 47 Pack / 70 Pack / 75 Pack / 100 Pack

Opening Way: Two tracks/Three tracks

Sealing material: EPDM rubber strip

Available Size: Opening Panel (Width:600-2500/Height:800-3000)

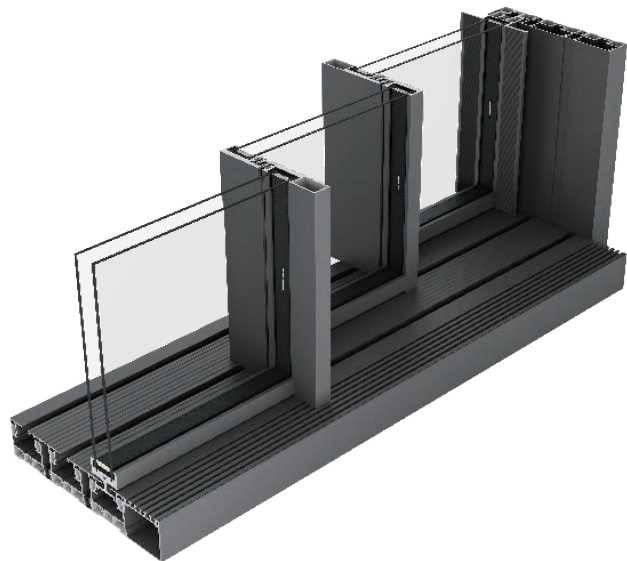
PRODUCT PROCESS

- The overall use of internal and external gluing process
- Embedded design of fan material
- Enhanced mid lift design
- Yarn fan thread pressing structure



WT-150

Heavy Sliding door



PRODUCT PARAMETES

Water tightness	450 _{pa}
Air tightness	4.5 _{m³/(m·h)}
Wind pressure resistance	4.5K _{pa}
Sound insulation performance	35 _{dB}
U-Factor(U.S./1-P)	0.28
SHGC	0.20

Glass: Double Tempered Glass with argon ags
6mm+25A+6mm
(PVDF Aluminum Strip Between double glass)

Profile: 6063-T5 aluminum profile

Profile Thinckness: frame 2.0MM , door leaf 3.0MM

Frame width: Two tracks 135mm / Three tracks 233mm/Four tracks 316mm

LOCK POINT: Panoramic door dedicated one letter lock

Hardware: Panoramic door integrated handle

Insulation strip: Standard

Opening Way: Two Tracks / Three Tracks/Four tracks

Sealing material: EPDM rubber strip

Available Size: Opening Panel (Width:1300-4000/Height:2000-6000)

PRODUCT PROCESS

- Design of Embedded Micro Seam Linear Track
- Design of high rail sunken hidden drainage
- The overlap is sealed with a strip of wool
- Seal the hooked edge with sealing tape



103

Sliding door



PRODUCT PARAMETES

Water tightness	300 _{pa}
Air tightness	4.5 _{m³/(m·h)}
Wind pressure resistance	3K _{pa}
Sound insulation performance	30 _{dB}
U-Factor(U.S./1-P)	0.39
SHGC	0.25

Glass: 8MM tempered glass

Profile: 6063-T5 aluminum profile

Profile Thinckness: frame 1.3MM , door leaf 2.0MM

Frame width: Two Tracks:103MM / Three Tracks:149MM

Handle: Extremely narrow specialized aluminum alloy handle

Hardware: Customized silent two wheel pulley

Opening Way: Two Tracks / Three Tracks

Optional package: New 32 Pack

Sealing material: EPDM rubber strip

Available Size: Opening Panel (Width:580-1200/Height:800-2600)

PRODUCT PROCESS

- Dark glue process
- Narrow fan design